

## Steel Weigh Bridge



### Key Features

- Static, Load cell based fully Electronic Road Weighbridge
- Available in both pit less and pit mounted
- Accurate measurement in every Weighment
- Indigenous/Innovative design
- Easy, Less time bearing installation
- Welding through Mig, Testing, Anti corrosive paint protection for weigh platform.
- Calibration done prior to dispatch
- More durable than conventional structure

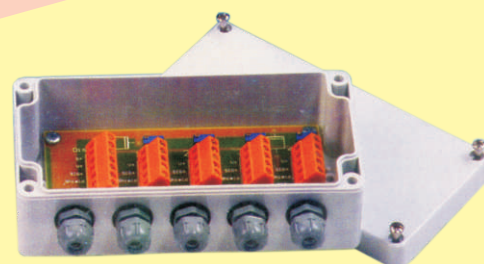
### Loadcell

- Hermetically welded and sealed IP-68
- MOC of Load cell S.S
- In-built surge arrestor for lightning protection
- 4000 Divisions OIML R-60 Class- C
- Combined Error  $\leq \pm 0.013$
- Weighing Indicator



### Junction Box

- Simple and cost effectively Load cell Connection through our special type junction box



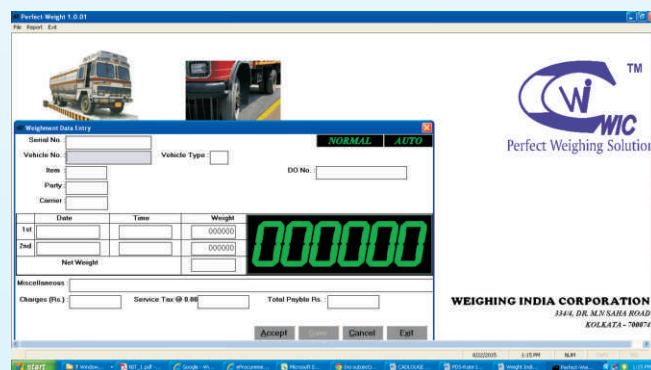
## Weighing Terminal

- Micro processor based weighing terminal for use on a single / double weigh platform
- EMI / RFI filter for input power, spike suppressor for input transients.
- Large LED / LCD Display for clear visibility
- Can be connected with Printer without PC.
- RS-232 interface
- Optional RS-485/Bluetooth/Ethernet and Networking Interface
- PS-II Keyboard Connectivity
- Optional Extra Display
- Powder coated MS Housing



## Softweigh

- Database Oracle, My SQL, MS-SQL, Sybase, Postgre SQL supported.
- Code based different required field (Material, supplier, Carrier, Vehicle Type etc.) in Weighment Slip.
- Optional Customizable fields in Weighment slip
- Report generating facility on specific queries.
- Enhanced Security through password protection for users.
- Optional Web camera / CCTV integration.
- Optional ERP / SAP compatibility



## Specification

		Platform size (mtrs.)	No. of Load cell Used
25 MT	5kg.	5x3 / 7.5x3	4/6
30 MT	5kg.	5x3 / 7.5 x 3	4/6
40 MT	5kg.	7.5 x 3 / 9x3	4/6
50 MT	5kg./10 kg.	7.5 x3/9x3	4/6
60 MT	10kg.	7.5x3 / 9x3 / 12x3 / 16x3	4/6/8
80 MT	10kg.	7.5 x3 / 9x3 / 12x3 / 16x3 / 18x3	4/6/8/10
100 MT	10kg.	12x3 / 15x3 / 16x3 / 18x3	6/8/10
150 MT	20 kg.	16x3 / 18x3	8/10

## Truck Weighbridge



### Key Features

- Static , Load cell based fully Electronic, portable truck scale
- Available in Pit less model
- Rugged , durable module structure
- Accurate measurement in every Weighment
- Indigenous/Innovative design
- Easy installation
- Welding through Mig, Testing, Anti corrosive paint protection for weigh platform.
- MS Ramp provided with Weighbridge
- Less cost involve for civil foundation
- Calibration done prior to dispatch
- Easy Dismantling & Carrying process from one site to another

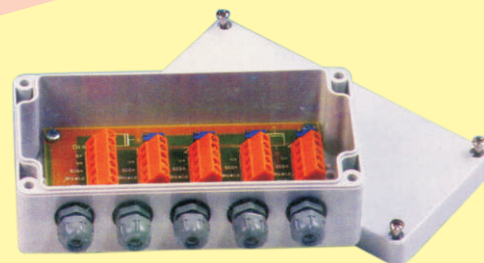
### Loadcell

- Hermetically welded and sealed IP-68
- MOC of Load cell S.S
- In-built surge arrestor for lightning protection
- 4000 Divisions OIML R-60 Class- C
- Combined Error  $< \pm 0.013$
- Weighing Indicator



### Junction Box

- Simple and cost effectively Load cell Connection through our special type junction box





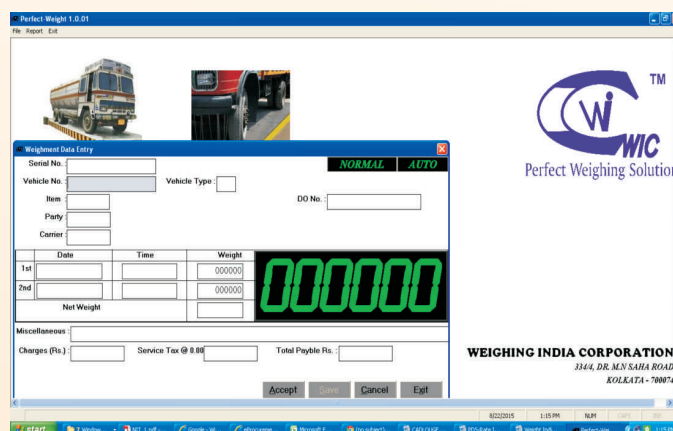
### WICWB Weighing Terminal

- WICWB is a micro processor based weighing terminal for use on a single / double weigh platform
- EMI / RFI filter for input power, spike suppressor for input transients.
- Large LED/LCD Display for clear visibility
- Can be connected with Printer without PC.
- RS-232 interface
- Optional RS-485/Bluetooth/Ethernet and Networking Interface
- PS-II Keyboard Connectivity
- Optional Extra Display
- Powder coated MS Housing



### Softweigh

- Database Oracle, My SQL, MS-SQL, Sybase, Postgre SQL supported.
- Code based different required field (Material, supplier, Carrier, Vehicle Type etc.) in Weighment Slip.
- Optional Customizable fields in Weighment slip
- Report generating facility on specific queries.
- Enhanced Security through password protection for users.
- Optional Web camera / CCTV integration.
- Optional ERP / SAP compatibility



### Specification

Capacity (Max.)	Accuracy	Platform size (mtrs.)	No. of Load cell Used
25 MT	5kg.	5x3 / 7.5x3	4/6
30 MT	5kg.	5x3 / 7.5 x 3	4/6
40 MT	5kg.	7.5 x 3 / 9x3	4/6
50 MT	5kg./10 kg.	7.5 x3/9x3	4/6
60 MT	10kg.	7.5x3 / 9x3 / 12x3 / 16x3	4/6/8
80 MT	10kg.	7.5 x3 / 9x3 / 12x3 / 16x3 / 18x3	4/6/8/10
100 MT	10kg.	12x3 / 15x3 / 16x3 / 18x3	6/8/10
150 MT	20 kg.	16x3 / 18x3	8/10

## Weigh Pads



### Key Features

- Strong, tough, easy-to-use portable scales
- Very light Weight and Accurate measurement in every Weighment
- Indigenous/Innovative design
- Axle Weight of the truck measured by placing the wheels on the Weigh Pads
- Can be placed on any compacted level surface
- Very Low height of Weigh Pad and is easy for any vehicle to climb on it for weighment
- Anti corrosive paint protection for weigh pad.
- The waterproof and robust weight sensors
- Less time consuming and economical installation
- No requirement of any civil foundation
- Calibration and testing done prior to dispatch

### Specifications:

- Width: 24", Section Weight: 20lbs and Thickness: 20mm
- Material: High density plastic/rubber compound
- Temperature Range: -40 deg C to +55 deg C
- Output: 0.6 to 1.0 mV/V.
- Excitation: 5 to 24 VDC.
- Stability: 0.5% full scale/year.
- Overload Capacity: 200% full scale.
- Ground level Requirement: <5mm within 0-4m.
- Static Accuracy: 0.25% full scale or better.
- Operating Temperature range: 10 to +55 deg C.
- Input/Output Resistance: 560 ohms +/- 50 ohms.
- Rated capacity: up to 20 ton per pad.

## WIC-1 Series

## Reliable and easy Weighing cum Counting

Retail, Postal & Courier, Manufacturing ,  
Packaging industry and many more .



## Features

- User Friendly
- Special FRP body, Washable,
- Corrosion proof
- Over Load protection feature
- High Quality Load cell
- Micro controller Based system
- 24 BIT ADC
- Piece counting
- Weight retains during the power Failure
- Rechargeable battery
- Battery Charger
- Back side Display

## Optional

- Rs232 Interface
- Piece Counting
- Gram to Liter conversion
- Flame proof Enclosure
- Memory accumulation
- Set point Buzzer sound
- Remote Display
- Customized design

## Specification

Capacity (Max.)	Accuracy	Pan Size in mm	Top Plate Material
3kg	100mg	190 x 240	SS
5kg	200 mg	190 x 240	SS
5kg	500mg	190 x 240	SS
10kg	1g	190 x 240	SS
20kg	2g	190 x 240	SS

- |                                    |        |   |
|------------------------------------|--------|---|
| • Display Type                     | _____➔ | Red or Green FND                        |
| • Display Digit                    | _____➔ | 6 Digit                                 |
| • Display size                     | _____➔ | 19mm.                                   |
| • Number of Keys                   | _____➔ | 5 Keys                                  |
| • Power supply                     | _____➔ | 230V(+/-15) AC, 50Hz                    |
| • Power Consumption                | _____➔ | 13W                                     |
| • Operating Temperature / humidity | _____➔ | 0°C to 45°C/85% RH Max (Non-Condensing) |

## WIC-4 Series

## Water Proof Weighing Scale

Retail, Postal & Courier, Manufacturing ,  
Packaging industry Fish & Sea food, Meat & butchery  
industries and many more .and many more .



### Features

- Occupying less space
- Water proof, Washable
- Over Load protection feature
- High Quality Load cell
- Micro controller Based system
- 24 BIT ADC
- User Friendly
- Piece counting
- Weight retains during the power Failure
- Rechargeable battery
- Battery Charger
- Back side Display

### Optional

- Rs232 Interface
- Gram to Liter conversion
- Memory accumulation
- Set point Buzzer sound
- Remote Display
- Customized design

## Specification

Capacity (Max.)	Accuracy	Pan Size in mm	Top Plate Material
3kg	100mg	175 x 225	ABS
5kg	200 mg	175 x 225	ABS
5kg	500mg	175 x 225	ABS
10kg	1g	175 x 225	ABS
20kg	2g	175 x 225	ABS



- |                                    |       |   |
|------------------------------------|-------|---|
| • Display Type                     | _____ | → Red or Green FND                        |
| • Display Digit                    | _____ | → 6 Digit                                 |
| • Display size                     | _____ | → 19mm.                                   |
| • Number of Keys                   | _____ | → 5 Keys                                  |
| • Power supply                     | _____ | → 230V(+/-15) AC, 50Hz                    |
| • Power Consumption                | _____ | → 13W                                     |
| • Operating Temperature / humidity | _____ | → 0°C to 45°C/85% RH Max (Non-Condensing) |



## WIC-2 Series

## Art of easy Weighing

Retail, Postal & Courier, Manufacturing ,  
Packaging industry and many more .



### Features

- Large Platter size
- Special FRP body, Washable, Corrosion proof
- Over Load protection feature
- High Quality Load cell
- Micro controller Based system
- 24 BIT ADC
- User Friendly
- Weight retains during the power Failure
- Rechargeable battery
- Battery Charger
- Back side Display

### Optional

- RS 232 Interface
- Piece Counting
- Gram to Liter conversion
- Flame proof Enclosure
- Memory accumulation
- Set point Buzzer sound
- Remote Display
- Customized design

### Specification

Capacity (Max.)	Accuracy	Pan Size in mm	Top Plate Material
10 kg.	1g.	240 x 300	SS
20 kg.	2g.	240 x 300	SS
20kg.	1g.	240 x 300	SS
30 kg.	5g.	240 x 300	SS
30 kg.	2g.	240 x 300	SS
30 kg.	1g.	240 x 300	SS

• Display Type	→	Red or Green FND
• Display Digit	→	6 Digit
• Display size	→	19mm.
• Number of Keys	→	5 Keys
• Power supply	→	230V(+/-15) AC, 50Hz
• Power Consumption	→	13W
• Operating Temperature / humidity	→	0°C to 45°C/85% RH Max (Non-Condensing)



## WIC-3 Series

## Popular Weighing

Retail, Postal & Courier, Manufacturing ,  
Packaging industry and many more .



### Features

- Large Platter size
- SS body, Washable, Corrosion proof
- Over Load protection feature
- High Quality Load cell
- Micro controller Based system
- 24 BIT ADC
- User Friendly
- Weight retains during the power Failure
- Rechargeable battery
- Battery Charger
- Back side Display

### Optional

- MS body
- RS232 Interface
- Piece Counting
- Gram to Liter conversion
- Flame proof Enclosure
- Memory accumulation
- Set point Buzzer sound
- Remote Display
- Customized design

### Specification

Capacity (Max.)	Accuracy	Pan Size in mm	Top Plate Material
10 kg.	1g.	240 x 300	SS
20 kg.	2g.	240 x 300	SS
20kg.	1g.	240 x 300	SS
30 kg.	5g.	240 x 300	SS
30 kg.	2g.	240 x 300	SS
30 kg.	1g.	240 x 300	SS

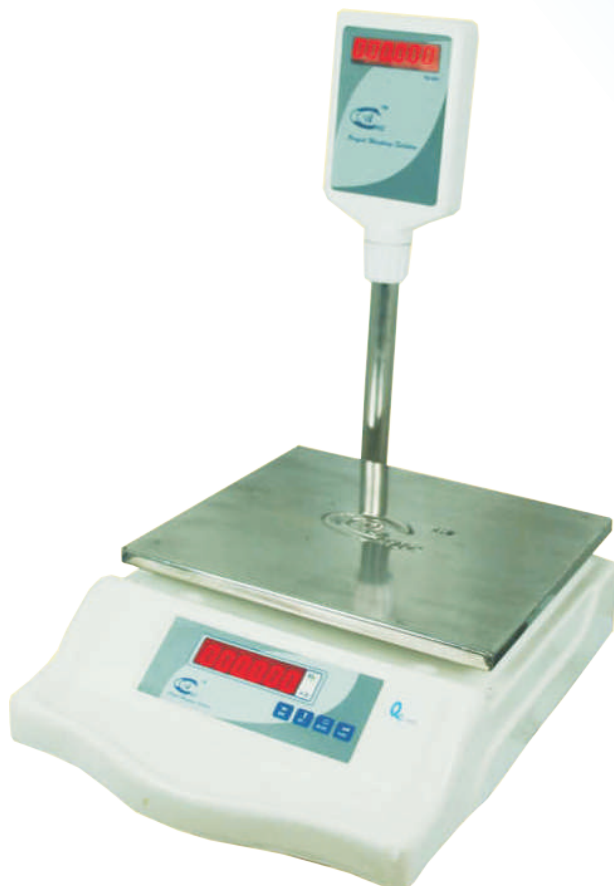


- |                                    |       |   |
|------------------------------------|-------|---|
| • Display Type                     | _____ | → Red or Green FND                        |
| • Display Digit                    | _____ | → 6 Digit                                 |
| • Display size                     | _____ | → 19mm.                                   |
| • Number of Keys                   | _____ | → 5 Keys                                  |
| • Power supply                     | _____ | → 230V(+/-15) AC, 50Hz                    |
| • Power Consumption                | _____ | → 13W                                     |
| • Operating Temperature / humidity | _____ | → 0°C to 45°C/85% RH Max (Non-Condensing) |

## WIC-5 Series

## Reliable and Easy Weighing

Retail, Postal & Courier, Manufacturing ,  
Packaging industry and many more .



### Features

- Large Platter size
- Special FRP body, Washable, Corrosion proof
- Over Load protection feature
- High Quality Load cell
- Micro controller Based system
- 24 BIT ADC
- User Friendly
- Weight Retains during the power Failure
- Rechargeable battery
- Battery Charger
- Pole display with Rugged pole stand

### Optional

- Rs232 Interface
- Piece Counting
- Gram to Liter conversion
- Flame proof Enclosure
- Memory accumulation
- Set point Buzzer sound
- Remote Display
- Customized design

### Specification

Capacity (Max.)	Accuracy	Pan Size in mm	Top Plate Material
10kg.	1g	240 x 300	SS
20kg.	1g.	240 x 300	SS
20kg.	2g.	240 x 300	SS
30kg.	5g.	240 x 300	SS
30kg.	2g.	240 x 300	SS
30kg.	1g.	240 x 300	SS

- |                                    |        |   |
|------------------------------------|--------|---|
| • Display Type                     | _____➔ | Red or Green FND                        |
| • Display Digit                    | _____➔ | 6 Digit                                 |
| • Display size                     | _____➔ | 19mm.                                   |
| • Number of Keys                   | _____➔ | 5 Keys                                  |
| • Power supply                     | _____➔ | 230V(+15) AC, 50Hz                      |
| • Power Consumption                | _____➔ | 13W                                     |
| • Operating Temperature / humidity | _____➔ | 0°C to 45°C/85% RH Max (Non-Condensing) |

## WIC-6 Series

## Reliable and Easy Weighing

Retail, Postal & Courier, Manufacturing ,  
Packaging industry and many more .



### Features

- Large Platter size
- SS body, Washable, Corrosion proof
- Over Load protection feature
- High Quality Load cell
- Micro controller Based system
- 24BIT ADC
- User Friendly
- Weight retains during the power Failure
- Rechargeable battery
- Battery Charger
- Pole display with Rugged pole stand

### Optional

- MS body
- RS232 Interface
- Piece Counting
- Gram to Liter conversion
- Flame proof Enclosure
- Memory accumulation
- Set point Buzzer sound
- Remote Display
- Customized design

### Specification

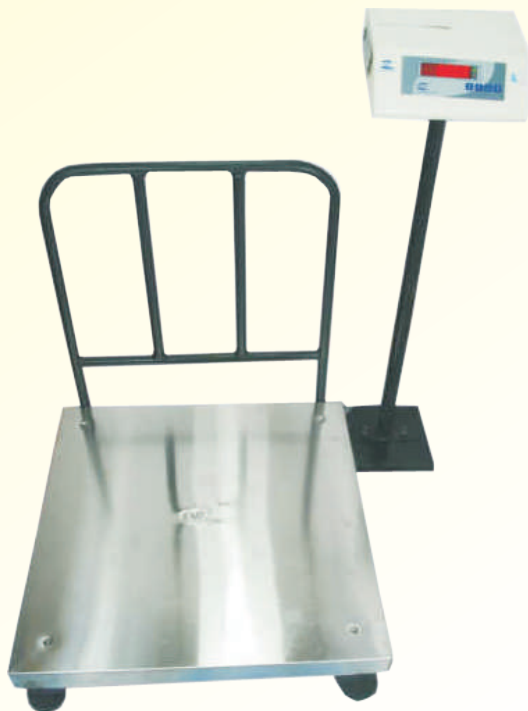
Capacity (Max.)	Accuracy	Pan Size in mm	Top Plate Material
10kg.	1g	240 x 300	SS
20kg.	1g.	240 x 300	SS
20kg.	2g.	240 x 300	SS
30kg.	5g.	240 x 300	SS
30kg.	2g.	240 x 300	SS
30kg.	1g.	240 x 300	SS

- Display Type → Red or Green FND
- Display Digit → 6 Digit
- Display size → 19mm.
- Number of Keys → 5 Keys
- Power supply → 230V(+/-15) AC, 50Hz
- Power Consumption → 13W
- Operating Temperature / humidity → 0°C to 45°C/85% RH Max (Non-Condensing)

## WIC-7 Series

## Perfect Platform Weighing

Retail, Commercial & Industrial Application



### Features

- Rugged Net type structure design
- Over Load protection
- High Quality IP 67 Load cell used in the system
- Micro controller Based system
- 24BIT ADC
- User Friendly
- Weight Retains during the power Failure
- Rechargeable battery
- Battery Charger
- Outside Battery opener
- Powder cotted MS console
- Attached or Separate pole

### Optional

- Rs232 Interface
- Gram to Liter conversion
- Flame proof Enclosure
- Memory accumulation
- Set point Buzzer sound
- Remote Extra Display
- Customized design

### Specification

Capacity (Max.)	Accuracy	Platform Size in mm	Top Plate Material
30kg.	5g	400 x 400	SS
50kg.	5g.	400 x 400 / 500 x 500	SS/ MS Chkd
60kg.	5g.	400 x 400 / 500 x 500	SS/ MS Chkd
60kg.	10g.	400 x 400 / 500 x 500	SS/ MS Chkd
75kg.	5g.	400 x 400 / 500 x 500	SS/ MS Chkd
100 kg.	10g.	500 x 500 / 600 x 600	SS/ MS Chkd
200kg	20g.	500 x 500 / 600 x 600	SS/ MS Chkd
300 kg	50g.	600 x 600	SS/ MS Chkd
300kg	20g.	600 x 600	SS/ MS Chkd



- |                                    |       |   |
|------------------------------------|-------|---|
| • Display Type                     | _____ | ➤ Red or Green FND                        |
| • Display Digit                    | _____ | ➤ 6 Digit                                 |
| • Display size                     | _____ | ➤ 19mm.                                   |
| • Number of Keys                   | _____ | ➤ 5 Keys                                  |
| • Power supply                     | _____ | ➤ 230V(+/-15) AC, 50Hz                    |
| • Power Consumption                | _____ | ➤ 13W                                     |
| • Operating Temperature / humidity | _____ | ➤ 0°C to 45°C/85% RH Max (Non-Condensing) |



## WIC-8 Series

## Perfect Weighing

Bulk volume materials in Retail, Commercial & Industrial application.



### Features

- Rugged Net type structure design
- Over Load protection
- High Quality IP 67 Load cell used in the system
- 24BIT ADC used in the system
- Micro controller Based system
- User Friendly
- Weight Retains during the power Failure
- Rechargeable battery
- Battery Charger
- Outside Battery opener
- Powder cotted MS console
- Attached or Separate pole

### Optional

- Rs232 Interface
- Piece Counting
- Gram to Liter conversion
- Flame proof Enclosure
- Memory accumulation
- Set point Buzzer sound
- Remote Extra Display
- Customized design

### Specification

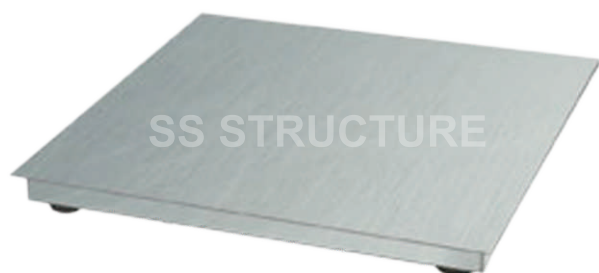
Capacity (Max.)	Accuracy	Platform Size in mm	Top Plate Material	No of Lodecell
500 kg.	50g	600 x 600	MS Chkd	1 No
500kg.	50g.	600 x 800	MS Chkd	1No
500kg.	50g.	750 x 750	MS Chkd	1No
1000 kg.	100g.	600 x 800 / 750 x 750	MS Chkd	1No

- |                                    |   |   |
|------------------------------------|---|---|
| • Display Type                     | → | Red or Green FND                        |
| • Display Digit                    | → | 6 Digit                                 |
| • Display size                     | → | 19mm.                                   |
| • Number of Keys                   | → | 5 Keys                                  |
| • Power supply                     | → | 230V(+/-15) AC, 50Hz                    |
| • Power Consumption                | → | 13W                                     |
| • Operating Temperature / humidity | → | 0°C to 45°C/85% RH Max (Non-Condensing) |

## WIC-9 Series

## Accurate and easy weighing..

Heavy & wide materials placed directly on weigh platform or by material handling system in industrial application.



### Features

- Rugged structure
- Over load protection 150%
- Four nos IP -68 share Beam type load cell
- Painted with anti corrosive paint for MS Platform.
- Micro controller & RTC based Indicator unit
- On-board high resolution ADC.
- Analog & Digital Filtering
- Sampling - 15 readings/second
- Remote input for GROSS/NET, TARE and Zero functions
- Different Password for Calibration & normal operation

### Programmable Parameters :

- Decimal Point, Capacity, Display Resolution, Grad, Zero Track Band, Zero Range
- Configuration Data are stored in serial NVRAM, Battery backup not required
- Calibration through front keypad (Offset: 'Z' & Span:'S' stored in NVRAM)

### Optional

- Relay outputs
- Retransmission: 4-20 mA/0-10V Proportional indicated weight
- RS-232/485 Serial Port for communication with remote display/ Printer/ Computer
- DATA storage facility through USB Storage device
- Flame proof Encloser

### Specification

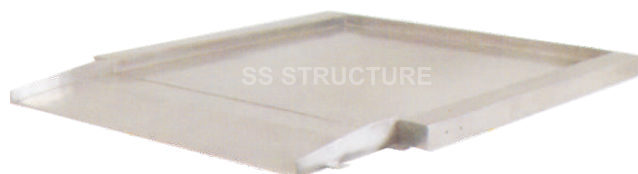
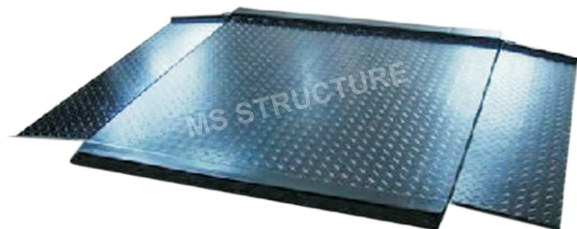
Capacity (Max.)	Accuracy	Platform Size in mm	Top Plate Material	No of Loadcell	MOC of Structure
1000 kg.	100g.	1000 x 1000	MS Chkd / SS	4 No	SS/MS
1500kg.	200g.	1250 x 1250	MS Chkd / SS	4No	SS/MS
2000kg.	200g.	1500 x 1500	MS Chkd / SS	4 No	SS/MS
5000 kg.	500g.	2000 x 2000	MS Chkd / SS	4 No	SS/MS

- Display Type → 16-segment Red LED
- Display Digit → 6 Digit
- Display size → 0.8"
- Number of Keys → 6 Keys
- Power supply → 110-230VAC, 50 Hz.
- Power Consumption → 15 w
- Operating Temperature / humidity → 0°C to 45°C/85% RH Max (Non-Condensing)

## WIC-10 Series

## Accurate and easy weighing..

Heavy materials placed directly on weigh platform or placed through trolley, for Industrial use especially in Pharma & Chemical Industry



### Features

- Ultra Low Profile Platforms range, 55-60 mm in height
- Easy loading by pallet trucks or by hand
- Rugged construction for industrial use
- Easy installation and portability.
- Over Load capacity 150% of the rated capacity
- Weighing Data stored or transfer through USB Storage device (Memory Stick) or Blue tooth .
- Micro controller & RTC based Indicator unit
- On-board high resolution ADC.
- Analog & Digital Filtering
- Sampling - 15 readings/second
- Remote input for GROSS/NET, TARE and Zero functions
- Different Password for Calibration & normal operation

### Programmable Parameters :

- Decimal Point, Capacity, Display Resolution, Grad, Zero Track Band, Zero Range
- Configuration Data are stored in serial NVRAM, Battery backup not required
- Calibration through front keypad (Offset: 'Z' & Span:'S' stored in NVRAM)

### Optional

- Relay outputs
- Retransmission: 4-20 mA/0-10V Proportional indicated weight
- RS-232/485 Serial Port for communication with remote display/ Printer/ Computer



### Specification

Capacity (Max.)	Accuracy	Platform Size in mm	Top Plate Material	No of Loadcell	MOC of Structure
300kg	50g.	750 x 750	MS Chkd / SS	1 No	SS/MS
500kg.	50g.	750 x 750	MS Chkd / SS	1No	SS/MS
1000kg.	100g.	750 x 750	MS Chkd / SS	1 No	SS/MS
1500kg.	200g.	1000 x 1000	MS Chkd / SS	4 No	SS/MS

- Display Type → 16-segment Red LED
- Display Digit → 6 Digit
- Display size → 0.8"
- Number of Keys → 6 Keys
- Power supply → 110-230VAC, 50 Hz.
- Power Consumption → 15 w
- Operating Temperature / humidity → 0°C to 45°C/85% RH Max (Non-Condensing)

## WIC-11 Series

## Perfect Weighing

Bulk volume materials in Retail, Commercial & Industrial application.



### Features

- For easy movement of material
- Smooth dust resistant roller and ramps with ZZ bearings
- Ramp with rollers on one side or both side
- MOC : MS or SS
- Rugged Net type structure design
- Over Load protection
- High Quality IP 67 Load cell used in the system
- 24BIT ADC used in the system
- Micro controller Based system
- User Friendly
- Weight Retains during the power Failure
- Rechargeable battery
- Battery Charger
- Outside Battery opener
- Powder cotted MS console
- Attached or Separate pole

### Optional

- Rs232 Interface
- Piece Counting
- Gram to Liter conversion
- Flame proof Enclosure
- Memory accumulation
- Set point Buzzer sound
- Remote Extra Display
- Customized design

### Specification

Capacity (Max.)	Accuracy	Platform Size in mm	Top Plate Material	MOC of Structor	MOC of Roller
300 kg.	50g	600 x 600	MS Chkd / SS	MS / SS	MS / SS
500kg.	50g.	600 x 800	MS Chkd/ SS	MS / SS	MS / SS
500kg.	50g.	750 x 750	MS Chkd/ SS	MS / SS	MS / SS
1000 kg.	100g.	600 x 800 / 750 x 750	MS Chkd/ SS	MS / SS	MS / SS

- Display Type → Red or Green FND
- Display Digit → 6 Digit
- Display size → 19mm.
- Number of Keys → 5 Keys
- Power supply → 230V(+/-15) AC, 50Hz
- Power Consumption → 13W
- Operating Temperature / humidity → 0°C to 45°C/85% RH Max (Non-Condensing)



## WIC-12 Series

## Total weighing solution

Adults , babies & kids, Hospitals, ANC Clinics, Institutions and OPDs



### Features

- Human Weighing in standing, sitting position
- Weighing Infants
- Stable platform made up of heavy MS Section
- Easy-to-read bright RED / Green LED display
- Stable and repeatable weight reading.
- Hi-tech 24 bit S-AADC technology provides high resolution for
- Better performance.
- Holds the stable weight.
- Indications for Zero, Lock, Battery, Battery low, A.C. On.
- 6V- 4AH SMF battery & charger.

### Optional

- Computer/Printer Interface.
- 24 col. thermal printer.

### Specification

Capacity (Max.)	Accuracy	Platform Size in mm	Top Plate Material	MOC of Structor
150 kg	20g	500 x 500	SS	MS

- |                                    |   |   |
|------------------------------------|---|---|
| • Display Type                     | → | Red or Green FND                        |
| • Display Digit                    | → | 6 Digit                                 |
| • Display size                     | → | 19mm.                                   |
| • Number of Keys                   | → | 5 Keys                                  |
| • Power supply                     | → | 230V(+/-15) AC, 50Hz                    |
| • Power Consumption                | → | 13W                                     |
| • Operating Temperature / humidity | → | 0°C to 45°C/85% RH Max (Non-Condensing) |

## WIC-13 Series

## Easy, Reliable, faster Baby Weighing

Medical Sectors & Personal use



### Features

- Easy to read Bright Green/ Red Led Both Side Display
- Analog & Digital filtering for stable Reading
- Display intensity adjustable for longer battery backup
- 'HOLD' function for locking the display of weight
- Spacious Baby bowl made up of ABS for comfort
- Rechargeable 6V, 4.5AH battery with battery Charger

### Optional

- RS 232 inter face to connect with PC
- 24 col. thermal printer.

### Specification

Capacity (Max.)	Accuracy	Overall Dimensions (mm)	Tray Material
20kg	20g	555(L) x 385(W) x 240 (H)	ABS

• Display Type	→	Red or Green FND
• Display Digit	→	6 Digit
• Display size	→	19mm.
• Number of Keys	→	5 Keys
• Power supply	→	230V(+/-15) AC, 50Hz
• Power Consumption	→	13W
• Operating Temperature / humidity	→	0°C to 45°C/85% RH Max (Non-Condensing)

## Weighing India Corporation

334/4, Dr. M.N.Saha Road, Kolkata - 700 074  
Ph. / Fax : + 91 33 2560 4703, E-mail : admin@wicweighinginstruments.com  
webe site : www.wicweighinginstruments.com

Note : The stamping by the legal metrology department is not required for above scales

## WIC-14 Series

## Easy, Reliable, faster Baby Weighing

Medical Sectors & Personal use



Personal Scale Mechanical Type



Personal Scale Digital Type

### Specification (Personal Scale Mechanical Type)

Capacity (Max.)	Accuracy	Standing Platform	MOC
150 kg	500 g	Suitable for Human weighing	MS

### Specification (Personal Scale Digital Type)

Capacity (Max.)	Accuracy	Standing Platform	Power
150 kg	100g	Suitable for Human weighing	Battery Operated

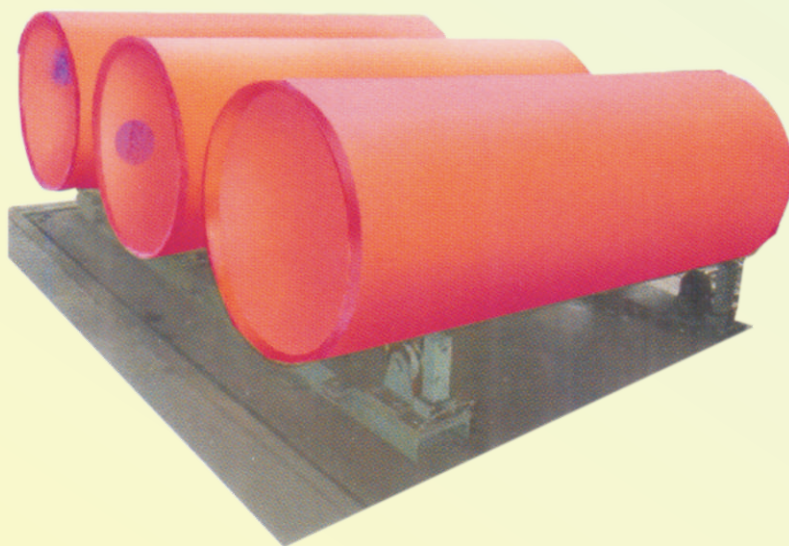
## Weighing India Corporation

334/4, Dr. M.N.Saha Road, Kolkata - 700 074  
Ph. / Fax : + 91 33 2560 4703, E-mail : [admin@wicweighinginstruments.com](mailto:admin@wicweighinginstruments.com)  
webe site : [www.wicweighinginstruments.com](http://www.wicweighinginstruments.com)

Note : The stamping by the legal metrology department is not required for above scales

## WIC-14 Series

Accurate and easy weighing cum charging or discharging system for industry use.



### Features

- Rugged structure
- Over load protection 150%
- Plat form with suitable trunion for easy rotation of cylinder .
- Micro controller & RTC based Indicator unit
- On-board high resolution ADC.
- Analog & Digital Filtering
- Sampling - 15 readings/second
- Rate of flow indication & control through Relay output
- Loss in weight indication
- Set point control
- Retransmission: 4-20 mA/0-10V Proportional indicated weight / rate of flow.
- Different Password for Calibration & normal operation

### Programmable Parameters

- Decimal Point, Capacity, Display Resolution, Grad, Zero Track Band, Zero Range, Set point
- Configuration Data are stored in serial NVRAM, Battery backup not required
- Calibration through front keypad (Offset: 'Z' & Span:'S' stored in NVRAM)

### Specification

Capacity (Max.)	Accuracy	Platform Size in mm	Top Plate Material	No of Lodecell	MOC of Structure
500kg.	100g.	600x800	MS Chkd / SS	4 No	SS/MS
1000kg.	200g.	1000 x 1000	MS Chkd / SS	4No	SS/MS
1500kg.	200g.	1000 x 1500	MS Chkd / SS	4 No	SS/MS
2000kg	500g	1500 x 2200	MS Chkd / SS	4 No	SS/MS
5000kg	1kg	1500 x 2500			



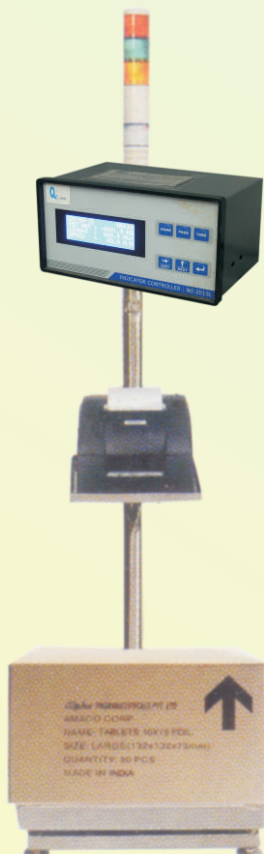
- Display Type → 20 Character x 4 Line LCD with back lit
- Display size → 0.8"
- Number of Keys → 6 Keys
- Power supply → 110-230VAC, 50 Hz.
- Power Consumption → 15 w
- Operating Temperature / humidity → 0°C to 45°C/85% RH Max (Non-Condensing)
-



## WIC-15 Series

## Accurate and Ideal weighing cum check weighing & label Printing

Packing & Shipping for any Industries.



### Features

- Rugged structure
- Plat form available with Roller
- Over load protection 150%
- Micro controller & RTC based Indicator unit
- On-board high resolution ADC.
- Analog & Digital Filtering
- Sampling - 15 readings/second
- Set point control
- Inter face with thermal printer
- Audio Visual alarm
- Key board for Entry , Product Name, Company Name Etc..
- Different Password for Calibration & normal operation

### Programmable Parameters

- Decimal Point, Capacity, Display Resolution, Grad, Zero Track Band, Zero Range, Set point

### Specification

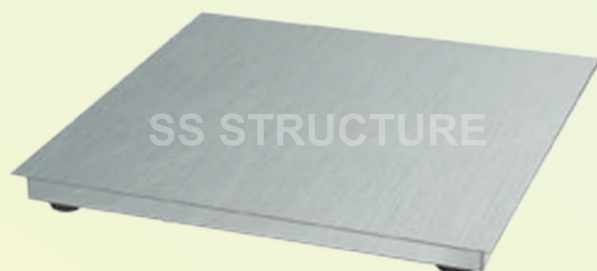
Capacity (Max.)	Accuracy	Platform Size in mm	Top Plate Material	No of Lodecell	MOC of Structure
50kg	5g	400 x 400/500x500	MS Chkd / SS	1No	SS/MS
100kg	10g	500x500/600x600	MS Chkd / SS	1No	SS/MS
200kg	20g	500x500/600x600	MS Chkd / SS	1No	SS/MS
300kg	50g	600x600	MS Chkd / SS	1No	SS/MS

- Display Type → 20 Character x 4 Line LCD with back lit
- Display size → 0.8"
- Number of Keys → 6 Keys
- Power supply → 110-230VAC, 50 Hz.
- Power Consumption → 15 w
- Operating Temperature / humidity → 0°C to 45°C/85% RH Max (Non-Condensing)
-

## WIC-9 Series

## Accurate and easy weighing..

Heavy & wide materials placed directly on weigh platform or by material handling system in industrial application.



### Features

- Rugged structure
- Over load protection 150%
- Four nos IP -68 share Beam type load cell
- High Accuracy Micro controller & RTC based Indicator unit
- Suitable for low light environments
- On-board high resolution ADC.
- Analog & Digital Filtering
- Sampling - 15 readings/second
- Remote input for GROSS/NET, TARE and Zero functions
- Different Password for Calibration & normal operation
- Dust Proof & Water Proof Encloser
- MOC of Load Cell SS

### Programmable Parameters :

- Decimal Point, Capacity, Display Resolution, Grad, Zero Track Band, Zero Range
- Configuration Data are stored in serial NVRAM, Battery backup not required
- Calibration through front keypad (Offset: 'Z' & Span:'S' stored in NVRAM)

### Optional

- Relay outputs
- Retransmission: 4-20 mA/0-10V Proportional indicated weight
- RS-232/485 Serial Port for communication with remote display/ Printer/ Computer
- DATA storage facility through USB Storage device
- Flame proof Encloser
- Compatible with Printer
- Remote Display



### Specification

Capacity (Max.)	Accuracy	Platform Size in mm	Top Plate Material	No of Loadcell	MOC of Structure
500kg	50g	1000 x 1000	MS Chkd / SS304	4 No	SS304/MS
1000 kg.	100g.	1000 x 1000	MS Chkd / Ss304	4No	SS304/MS
1500kg.	200g.	1250 x 1250	MS Chkd / Ss304	4 No	SS304/MS
2000kg.	200g.	1500 x 1500	MS Chkd / Ss304	4 No	SS304/MS
5000 kg.	500g.	2000 x 2000	MS Chkd / SS304	4 No	SS304/MS

- Display Type → 16-segment Red LED
- Display Digit → 6 Digit
- Display size → 0.8"
- Number of Keys → 6 Keys
- Power supply → 110-230VAC, 50 Hz.
- Power Consumption → 15 w
- Operating Temperature / humidity → 0°C to 45°C/85% RH Max (Non-Condensing)

## Weighing India Corporation

334/4, Dr. M.N.Saha Road, Kolkata - 700 074

Ph. / Fax : + 91 33 2560 4703, E-mail : admin@wicweighinginstruments.com

webe site : www.wicweighinginstruments.com

## Steel Weigh Bridge

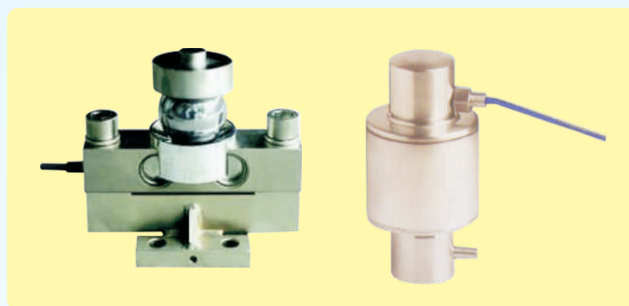


### Key Features

- Static, Load cell based fully Electronic Road Weighbridge
- Available in both pit less and pit mounted
- Accurate measurement in every Weighment
- Indigenous/Innovative design
- Easy, Less time bearing installation
- Welding through Mig, Testing, Anti corrosive paint protection for weigh platform.
- Calibration done prior to dispatch
- More durable than conventional structure

### Loadcell

- Hermetically welded and sealed IP-68 / IP69
- MOC of Load cell S.S
- In-built surge arrestor for lightning protection
- 4000 Divisions OIML R-60 Class- C
- Combined Error  $< \pm 0.013$



### Junction Box

- Simple and cost effectively Load cell Connection through our special type junction box

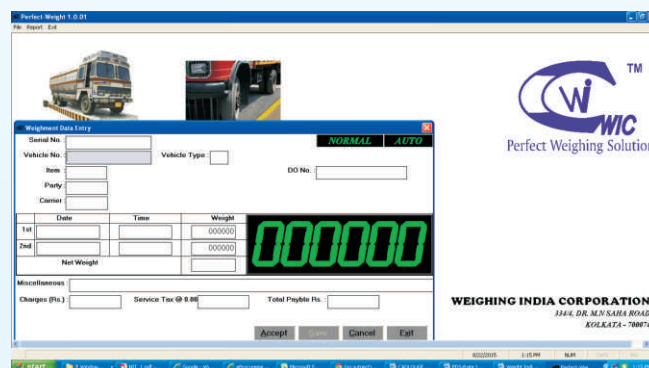


## Weighing India Corporation

334/4, Dr. M.N.Saha Road, Kolkata - 700 074  
Ph. / Fax : + 91 33 2560 4703, E-mail : admin@wicweighinginstruments.com  
webe site : www.wicweighinginstruments.com

## Weighing Terminal

- Advanced Micro processor based weighing terminal for use on a single / double weigh platform
- EMI / RFI filter for input power, spike suppressor for input transients.
- Large LED / LCD Display for clear visibility
- Auto zero tracking and zero adjustment by key
- Can be connected with Printer without PC.
- RS-232 interface
- Optional RS-485/Bluetooth/Ethernet and Networking Interface
- PS-II Keyboard Connectivity
- Optional Extra Display
- Powder coated MS/SS Housing
- Environmental Protection IP65
- Software Calibration
- Optional 4-20mA Retransmission output
- Power supply required 230V 50Hz



## Softweigh

- Database Oracle, My SQL, MS-SQL, Sybase, Postgre SQL supported.
- Code based different required field (Material, supplier, Carrier, Vehicle Type etc.) in Weighment Slip.
- Optional Customizable fields in Weighment slip
- Report generating facility on specific queries.
- Enhanced Security through password protection for users.
- Optional Web camera / CCTV integration.
- Optional ERP / SAP compatibility

## Specification

		Platform size (mtrs.)	No. of Load cell Used
25 MT	5kg.	5x3 / 7.5x3	4/6
30 MT	5kg.	5x3 / 7.5 x 3	4/6
40 MT	5kg.	7.5 x 3 / 9x3	4/6
50 MT	5kg./10 kg.	7.5 x3/9x3	4/6
60 MT	10kg.	7.5x3 / 9x3 / 12x3 / 16x3	4/6/8
80 MT	10kg.	7.5 x3 / 9x3 / 12x3 / 16x3 / 18x3	4/6/8/10
100 MT	10kg.	12x3 / 15x3 / 16x3 / 18x3	6/8/10
150 MT	20 kg.	16x3 / 18x3	8/10

## Weighing India Corporation

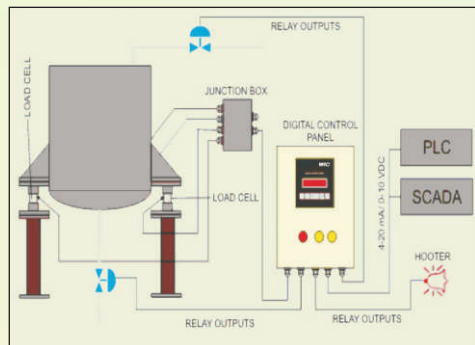
334/4, Dr. M.N.Saha Road, Kolkata - 700 074  
 Ph. / Fax : + 91 33 2560 4703, E-mail : admin@wicweighinginstruments.com  
 website : www.wicweighinginstruments.com



## WIC-WB Series

## Accurate and easy weighing..

Suitable for Tank weighing



### Features

- Advanced Micro processor based weighing terminal
- Over load protection 150%
- Four nos IP -68/IP69 compression type load cell
- Retransmission: 4-20 mA/0-10V Proportional indicated weight
- On-board high resolution ADC.
- Analog & Digital Filtering
- RS-232/485 Serial Port for communication
- Remote input for GROSS/NET, TARE and Zero functions
- Different Password for Calibration & normal operation
- Dust Proof & Water Proof Enclosure, Ip55
- Software Calibration
- System Accuracy 0.05% of total Load cell capacity
- Panel Mounted
- MOC of Load Cell SS
- Power supply required 230v 50Hz
- Environmental Protection of Load Cell IP68

### Programmable Parameters :

- Decimal Point, Capacity, Display Resolution, Grad, Zero Track Band, Zero Range
- Configuration Data are stored in serial NVRAM, Battery backup not required
- Calibration through front keypad (Offset: 'Z' & Span: 'S' stored in NVRAM)

### Optional

- Relay outputs
- DATA storage facility through
- USB Storage device
- Flame proof Encloser
- Compatible with Printer
- Remote Display



• Display Type	→	16-segment Red LED
• Display Digit	→	6 Digit
• Display size	→	0.8"
• Number of Keys	→	6 Keys
• Power supply	→	110-230VAC, 50 Hz.
• Power Consumption	→	15 w
• Operating Temperature / humidity	→	0°C to 55°C/85% RH Max (Non-Condensing)

## Weighing India Corporation

334/4, Dr. M.N.Saha Road, Kolkata - 700 074

Ph. / Fax : + 91 33 2560 4703, E-mail : admin@wicweighinginstruments.com

webe site : www.wicweighinginstruments.com